

RAISED ACCESS FLOORS

DATA CENTERS



COOK'S

CONSTRUCTION & CONSULTING



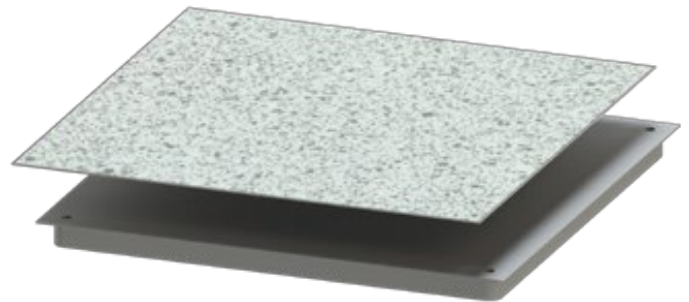
DATA CENTERS

RAISED ACCESS FLOORS

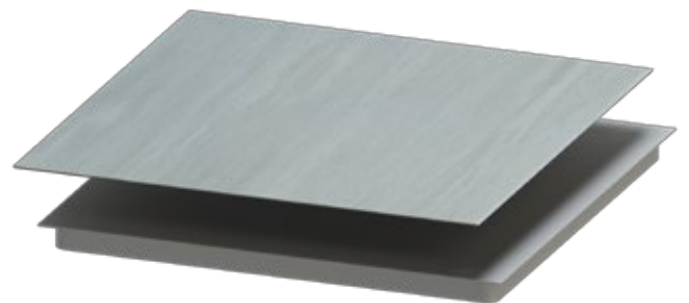
The data center environment demands flexibility and an ability to expand and adapt. Adapt with the ever increasing demand on companies and their technological requirements. Cloud computing, cloud storage and the increasing demand for upgrading software means the data center requires a raised access floor system.

The raised access floor system will provide many benefits to the data center;

- cable management and flexibility
- Effective cooling solutions by UFAD
- Easy reconfiguration
- The ability to add and maintain technologies
- Reduced maintenance and operating costs



ICON with HPL

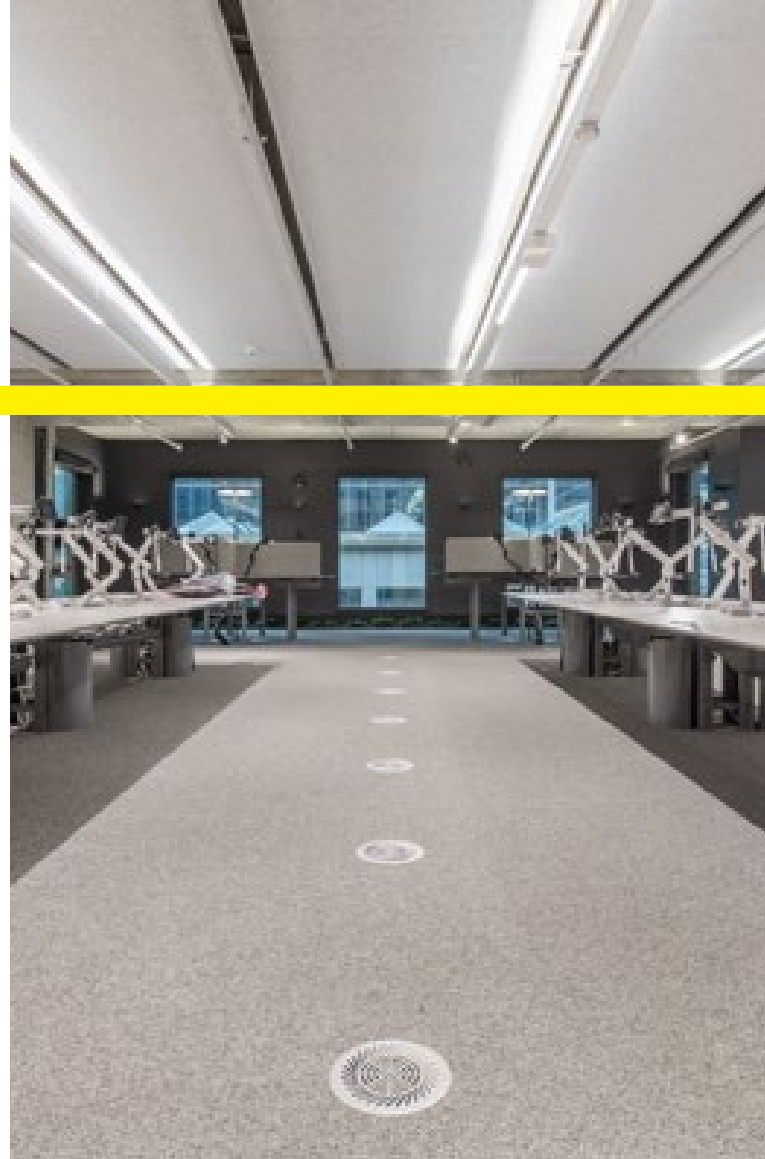


ICON with Vinyl

DATA CENTERS

RAISED ACCESS FLOORS

Icon Data HPL is a finished system providing static-dissipative commercial access floor panels. Anti-static, protective and risk reducing, these panels are suitable for commercial environments such as data centers, communication rooms, or other applications requiring ESD (electro-static discharge) properties. These panels allow an integrated floor finish whilst maintaining the functionality of an access floor with 100% underfloor accessibility. The HPL is prefinished onto a 600x600mm access floor panel, ensuring that your design maintains functional accessibility to the services in the underfloor space such as power, data, fire and hydraulics.



The ICON data HPL is a finished system designed for computer and data center environments. It can be used for mapping and distributing cabling, data and other electrical services in the sub-floor. The ICON data HPL system has a 1.6mm thick anti-static high-pressure laminate covering. The HPL protects against voltage shorts that can occur with electrical equipment and creates and electrostatic discharge to prevent buildup of the static electricity which could damage eth sensitive equipment.

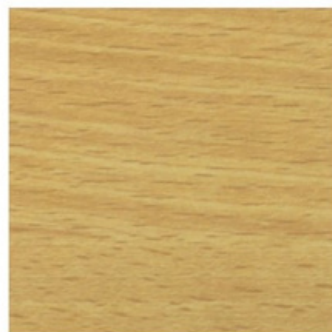
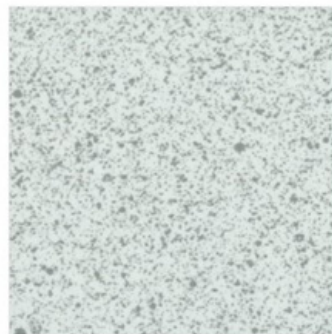
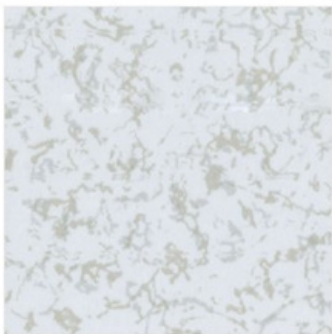
DATA CENTERS

RAISED ACCESS FLOORS

Data sheets available for the following ICON data series panels

- 4.5KN (1000lb) series
- 6.0KN (1250lb) series
- 9.0KN (2000lb) series
- 11.0KN (2500lb) series
- 13.0KN (3000lb) series

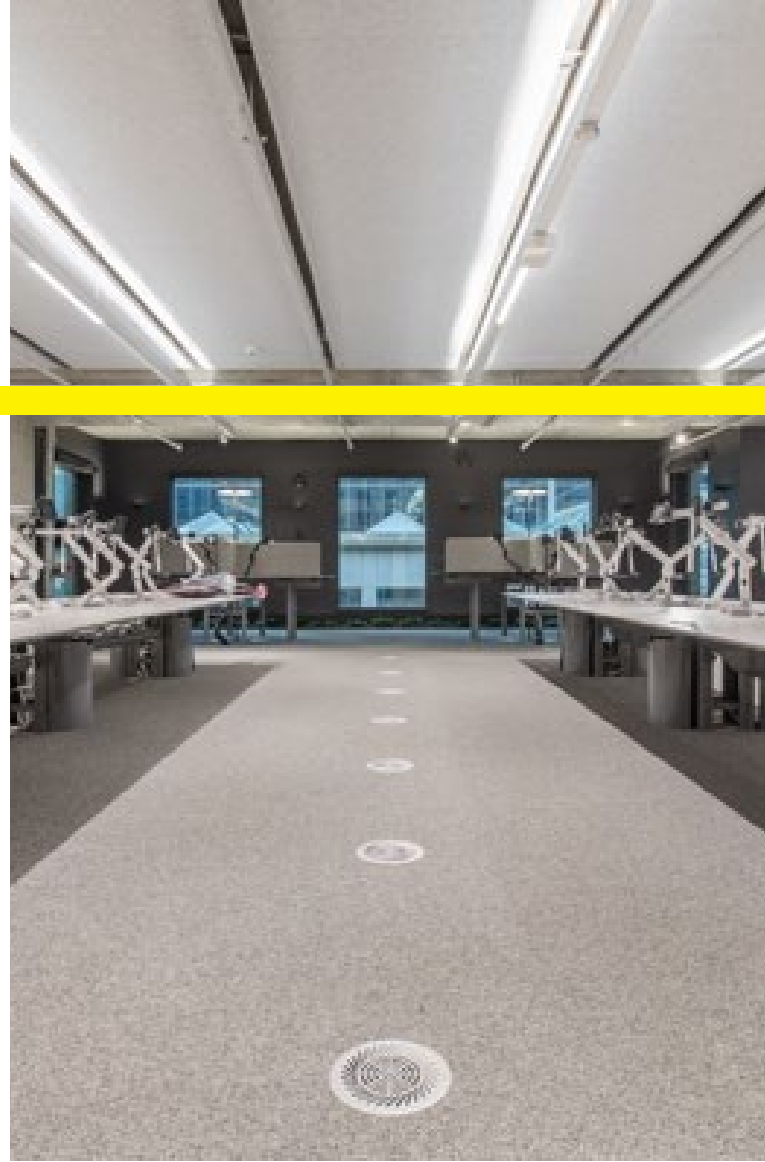
HPL Color HUB



DATA CENTERS

RAISED ACCESS FLOORS

ICON + Vinyl is a finished system providing static-dissipative commercial access floor panels. Anti-static, protective and risk reducing, these panels are suitable for commercial environments such as data centers, communication rooms, theatres or other applications requiring ESD (electro-static discharge) properties. Sustainable and easy to maintain, these panels allow an integrated floor finish whilst maintaining the functionality of an access floor with 100% underfloor accessibility.



The ICON data Vinyl is a finished system designed for computer and data center environments. It can be used for mapping and distributing cabling, data and other electrical services in the sub-floor.

The ICON data vinyl system has a dissipative anti-static 2mm vinyl surface finish. The vinyl protects against voltage shorts that can occur with electrical equipment and creates an electrostatic discharge to help prevent buildup of the static electricity which could damage equipment..

DATA CENTERS

RAISED ACCESS FLOORS

Data sheets available for the following ICON data series panels

- 4.5KN (1000lb) series
- 6.0KN (1250lb) series
- 9.0KN (2000lb) series
- 11.0KN (2500lb) series
- 13.0KN (3000lb) series

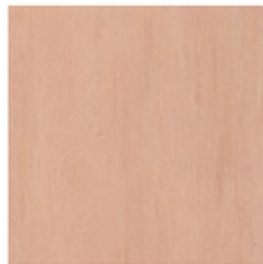
Vinyl Color HUB



PLATINUM (0002)



IVORY (0003)



CLAY (0004)



STEEL (0005)



HONEY (0006)



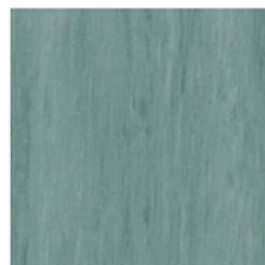
PEWTER (0013)



WHITE (0103)



STORM (0112)



GREEN (0306)

DATA CENTERS

RAISED ACCESS FLOORS

Please feel free to contact us

Russell J. Cook, GSC, Dip.ME
russ@cooksconstruction.net
(587) 370-8796

John Mackenzie, P.Eng
johnm@cooksconstruction.net
(236) 330-6014



DATA CENTERS

RAISED ACCESS FLOORS PROJECT HISTORY

Data Centre Projects (Western Canada)

- LNG Canada – 20,000 sf
- Enmax (multiple locations) – 10,000 sf
- Peter Lougheed Hospital – 2,500 sf
- Equinix Data Centre – 25,000 sf
- Shaw (Calgary) – 40,000 sf
- Cologix (Vancouver) – 15,000 sf
- BC Hydro (multiple locations) – 50,000 sf
- IOL South Campus (Calgary) – 25,000 sf
- Encana (Calgary) – 30,000 sf
- Calgary EOC – 40,000 sf
- University of Calgary – 5,000 sf
- AHS (Calgary) – 4,000 sf
- Rogers (Calgary) – 25,000 sf

Other notable data center projects:

- Equinix SY5 Data Centre Alexandria Australia – 120,000 sf
- Google Data Centre – Finland – 140,000 sf
- Fujitsu Data Centre Australia – 80,000 sf
- Equinix ME1 Data Centre Australia – 116,500 sf
- Data Centre 5 Ho Chi Minh – Vietnam – 10,000 sf
- Woolworths Data Centre Australia – 8,000 sf
- Port Data Centre – 10,000 sf
- BAC Data Centre – 15,000 sf
- Oceania Military – 100,000 sf
- 555 Collins Street Melbourne Australia (Amazon Data) – 2,000+ sf