

COOK'S CONSTRUCTION &
CONSULTING, INC

WHY CHOOSE COOK'S FOR YOUR RAISED ACCESS FLOOR?

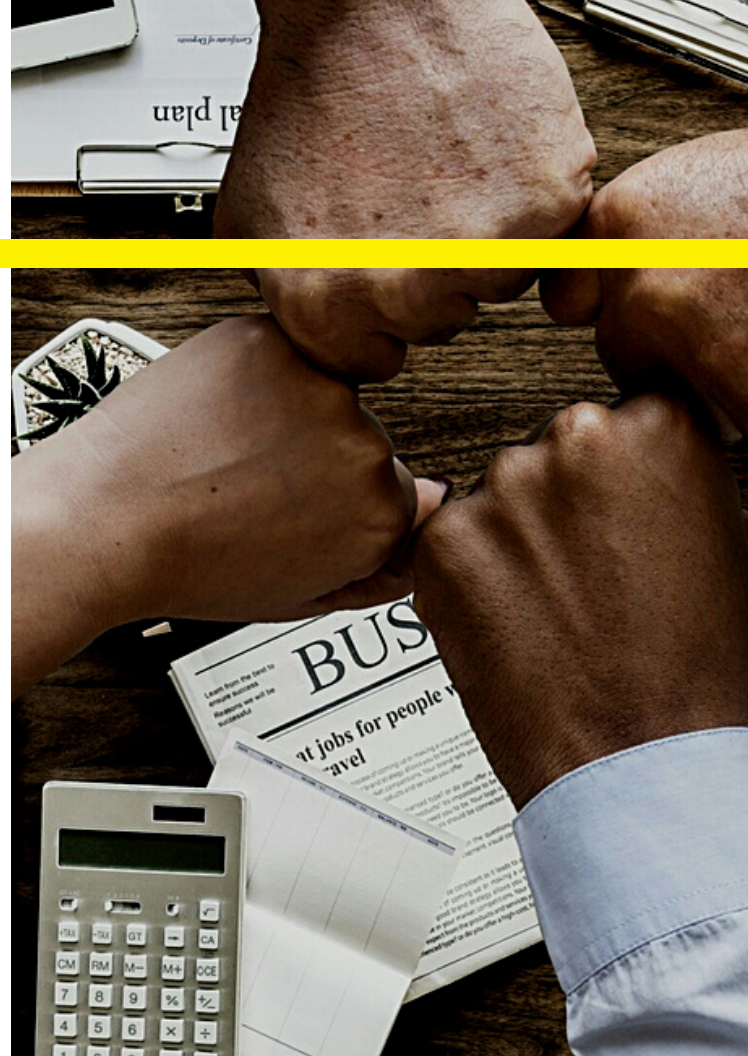


COOK'S
CONSTRUCTION & CONSULTING



THE TEAM

The Cook's Construction team has spent a combined 60+ years working with raised access floors, under floor air distribution systems, modular power and a variety of field & factory finishes. Cook's has successfully executed millions of square feet worth of raised access flooring across Canada. Some of the most notable raised access flooring installations in Canada has had the Cook's team involved!



Russell J. Cook GSC, Dip.ME - President

15 years of raised access flooring experience across Western Canada, working on such notable projects as, The BOW Tower, Imperial Oil, LNG Canada and the University of Calgary.

John Mackenzie, P.Eng - Senior Vice President

Over 30 years of experience working with the design, engineering and implementation of raised access flooring projects across Canada. Working on such projects as, Telus Gardens, The BOW Tower, U of BC and many more.

Coby Huether - Construction Manager

Over 15 years of raised access flooring experience across Western Canada, working along side Russell J. Cook on The Bower Tower, Imperial Oil and so much more.

Keith Smith, PMP - Senior Project Manager

Seasoned project manager with over 20 years of commercial construction experience across Western Canada!

SUSTAINABILITY

ASP Access floors are a leading global company in the access floor industry, revolutionizing access flooring systems! ASP has recently launched their "walk carbon neutral" program, ASP has undertaken life-cycle assessments and have obtained full EPDs on the Urban and Icon series panels systems!



Partnering with EKOS, ASP and Cook's are now able to offer our clients the option to select carbon neutral access flooring for their projects!

We offset the carbon footprint of our access floor system with certified carbon credits. The certified credits are sourced from projects that grow and protect rainforest around the world.

ASP and Cook's have enlisted local Canadian initiatives and are working hard to partner with indigenous leaders in Canada to offer a similar carbon offset right here in Canada!

Our clients can opt to certify their ASP Floor products for their project as either:

- **Zero Carbon Certification** where 100% of the products emissions are offset, or
- **Climate Positive Certification** where 120% of the products emissions are offset.



Product



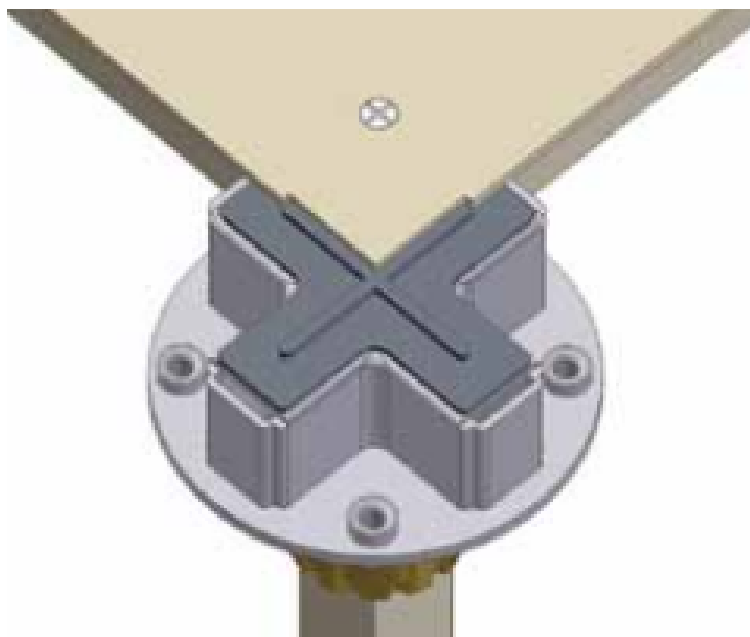
Product

PATENTED DESIGNS

The ASP panel systems have revolutionized the access floor industry with their commitment to research & development and patented designs. From the expansion joints built into the ICON series pedestals, to the "walk carbon neutral" program, showcases the ingenuity and the sustainability of the systems.



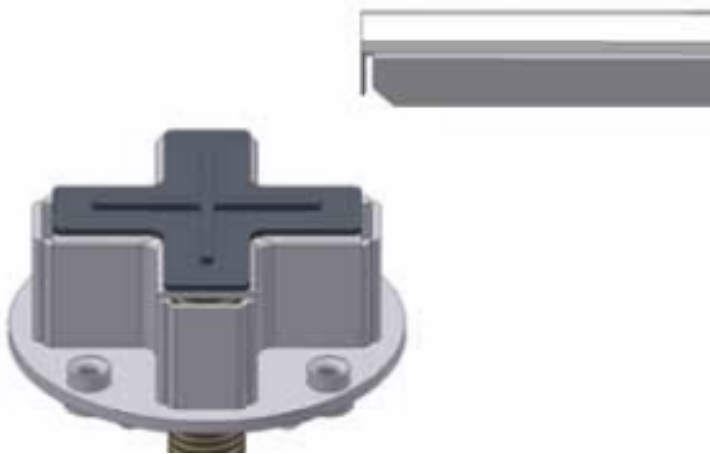
The built-in expansion joint and panel cut-out: is designed to keep the panels separated by 0.3mm at all times. This eliminates the the panels clicking or rubbing up against each other. Noise and sound from an underfoot feel has always been a contentious issue with raised access floors. The ASP patented designs have eliminated the issues making for a solid underfoot feel and making it feel like you're walking on a standard concrete deck.



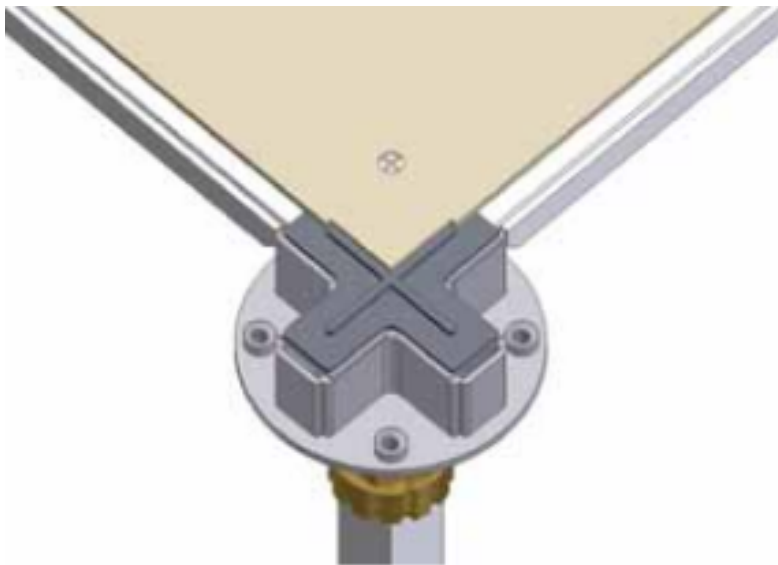
ASP has maintained this pedestal head design throughout their systems. The changes are made to the pedestal and through various connection points. The technology and patented design of the ASP head and panel system separates this system from the competitors around the globe.

AIR TIGHT SYSTEM

The ASP panel systems have revolutionized the access floor industry with their commitment to research & development and patented designs. **The air-tight** system from ASP has made the worry of air leakage within UFAD projects a thing of the past!



The ASP **Air-tight system** is a system that specifically designed to minimize air leakage for the the system is used with a UFAD setting. The system incorporates the use of a clip on air tight stringer that acts as a barrier in between the panels to eliminate air leakage.



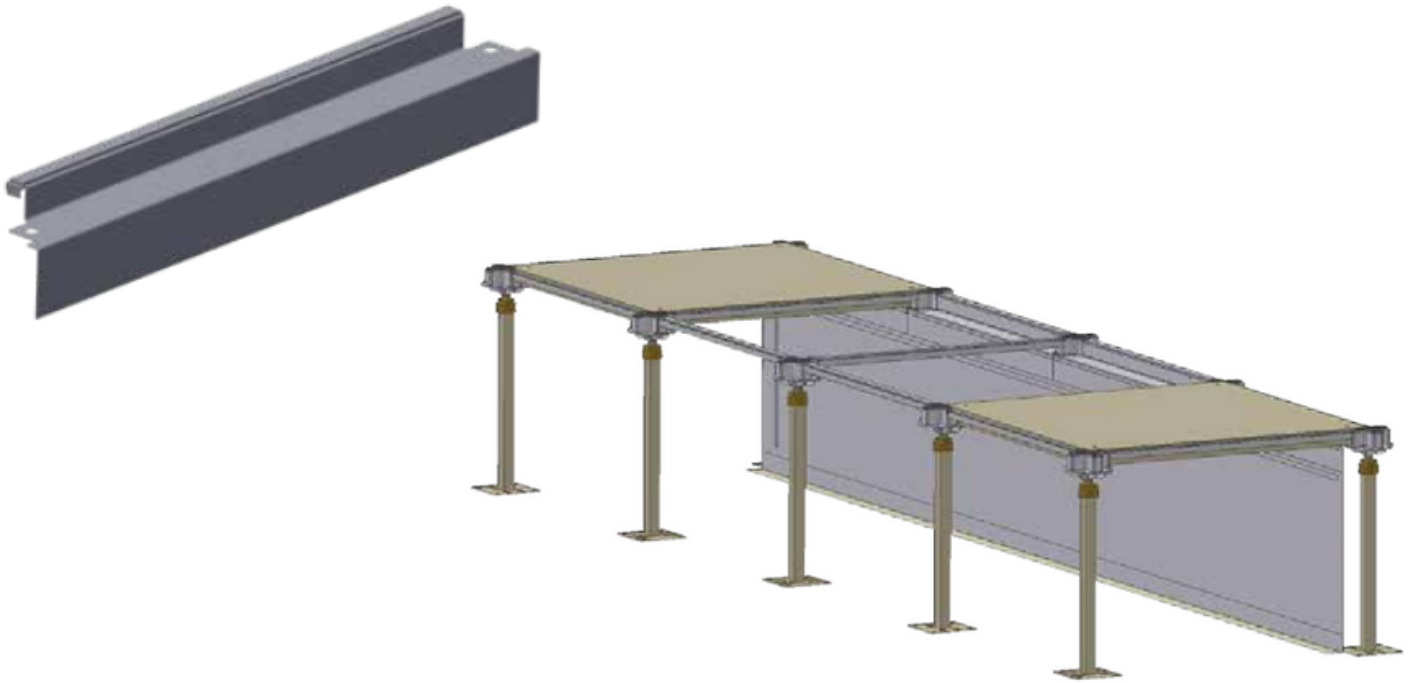
The built-in expansion joint and panel cut-out: is designed to keep the panels separated by 0.3mm at all times. This eliminates the the panels clicking or rubbing up against each other. Noise and sound from an underfoot feel has always been a contentious issue with raised access floors. The ASP patented designs have eliminated the issues making for a solid underfoot feel and making it feel like you're walking on a standard concrete deck.

AIR TIGHT SYSTEM

When zoning off under the floor or trying to seal for various reasons, the plenum baffle dividers are a point of potential leakage - ASP has overcome these issues by designing and patenting a system that incorporates the already impressive stringer system to work directly with a baffle plenum divider!

ZONE BAFFLE STRINGER

A proprietary ICON AIR Stringer is designed to be easily clipped into place on the ICON AIR pedestal head, allowing a fast and efficient air tight installation.



ZONE BAFFLE PANEL

The Zone Baffle Panel is manufactured to the required project finished floor height and is quickly clipped into place on the Zone Baffle Stringer.

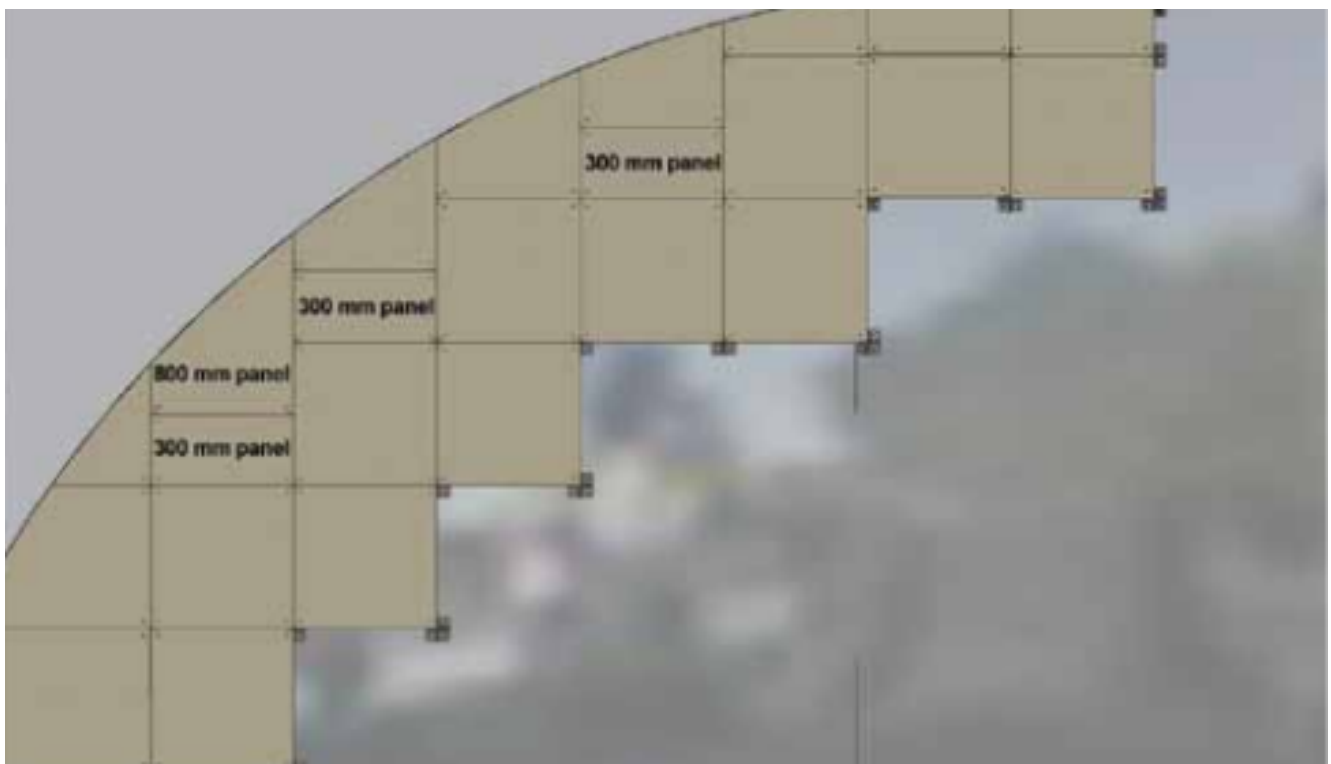


SMART DESIGNS

The ASP panel systems have revolutionized the access floor industry with their commitment to research & development and patented designs. The engineer's behind ASP's panel systems have thought of everything! Smart designs like over/under sized panels make odd shapes a breeze - eliminating the need for small odd cuts.



Full bearing panels, 600 x 300mm and 600 x 800mm are designed to minimize small off cuts around columns and finishing off at the perimeter. These panels may also be used where air grilles are being used for seamless transitions.



CONNECT WITH US TODAY!

Please feel free to contact us at
anytime!

Russell J. Cook, GSC, Dip.ME
russ@cooksconstruction.net
587-370-8796

John Mackenzie, P.Eng
johnm@cooksconstruction.net
236-330-6014

